

2010

Case Study for mailing solution & comprehensive threat management

For a Textile Company



SNAPSHOT

Industry:

- Textile industry

Business Challenges:

- Proven Mailing Solution
- Spam Protection
- Malware Protection
- Gateway Level Threat Protection
- Web Filtering

Embee's Solution:

- Microsoft Exchange 2007
- ForeFront TMZ 2010
- Symantec Brightmail Security
- Symantec Endpoint Protection

Business Benefits:

- Secured Mail Services with high availability and zero loss of mails
- Better Spam Protection
- Comprehensive Threat Protection internally and at Gateway Level
- Website Restriction & Filtering

Company Overview

Our Client is a co-operative society under Maharashtra State Cooperative Societies Act, 1960 for establishment of a spinning Mill. It was set up with the intention of utilizing the abundant cotton produced in the area to manufacture a value-added product. The government of Maharashtra is the major shareholder.

Business Challenges

Being in the textile industry, the customer has lot of internal back office operations and thus displays a high dependability on IT. Also it uses mails internally as well as externally for approvals, business proposals, etc. They also maintain an ERP Systems which is accessed by users from outside the company premises.

- Proven Mailing Solution with zero downtime and Mail Loss.
- Spam Protection
- Malware Protection
- Gateway Level Threat Protection
- Web Filtering & Web site blocking

Technology Challenges

- Transferring the current Mail boxes to Microsoft Exchange.
- Configuring the Mail Server as per Company Policies.
- Identification and blocking of Spam mail at the gateway.
- User Access & Restriction for Internet usage.
- Cleaning of Viruses in the current Network, Desktops & Servers.
- Protecting the Access of Servers & Data when accessed from outside the company premises.

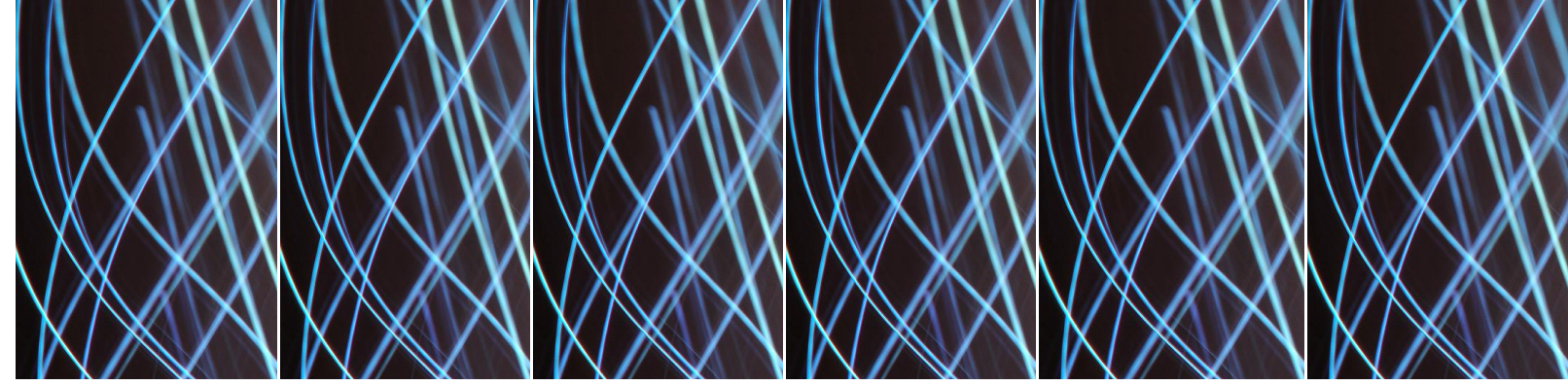


Solution

The client identified the IT needs to support their business model and preferred to go with a partner who have skilled and certified professionals to implement the solutions required and provide technical support in future. Embee Software Pvt. Ltd was chosen as their IT Vendor. Apart from its certified technical's, Embee's multi-location presence, wide range of IT products and strong business relationships with major IT Giants gave ESPL an edge over the others.

Team Embee organized a meeting with the client's management to get a transparent view of the client's requirements, future business plans and current troubles. Once Embee understood their needs and their IT policy they accordingly deployed a team of solution architects to prepare a fine and cost effective solution tuned to the client's requirement.

The Embee team was able to complete the project in hand within the time-frame and any support issues with client has identified and rectified at the earliest.



About Embee Software

Embee is an ISO 9001-2008 certified technology services and solutions provider whose service offerings span the entire range of IT. We deliver end-to-end solutions that can manage and support our customers' IT systems across the entire value chain — infrastructure, applications and ERP. This depth, diversity and delivery capability ensures adaptability to client needs, bringing out the most innovative solutions in every business and technology domain.

Embee's value proposition is based on its vast experience in providing single-window solutions to its customers across diverse function and technology areas. Each experience has transformed Embee to become a more mature solutions provider, and has enabled it to understand business, technology and operational elements in great detail.

Embee Software is also a world-class provider of turnkey IT solutions like Server & Storage Consolidation, Virtualization, Network Integration Solutions and Data Center Management Solutions, Embee provides end-to-end support with guaranteed SLA (Service Level Agreements) in order to optimize infrastructure management and align IT with business goals.

Contact Embee Software Pvt Ltd today for free consultation:

Embee Software Pvt Ltd,
8 A J C Bose Road, Circular Court, 2nd Fl,
Kolkata – 700-017, India.

E: marketing.cal@embee.co.in

T. +91 33 22891740