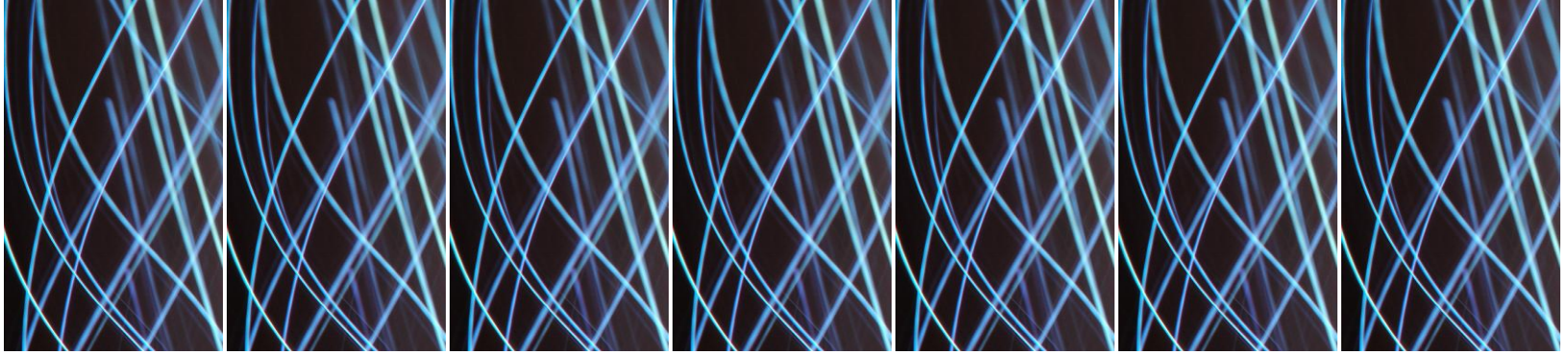


2010

Case study for ERP Implementation

For a leading Fast-Food Manufacturing
Company





SNAPSHOT

Industry

- Food Manufacturing & Retailing

Business Challenges

- Quick Response to customers demand
- Proper Resource utilization
- Real Time Control over outlets

Embee Solution

- ERP Implementation

Business Benefits

- Attending the actual customer demand
- Huge cost savings by proper stock management
- Quality services with competitive advantage
- Reduced discrepancy over SCM

Company Overview

The client is the most preferred fast-food manufacturer having over 39 outlets across Kolkata city. As a growth prospective the client planned to move nationwide.

Business Challenges

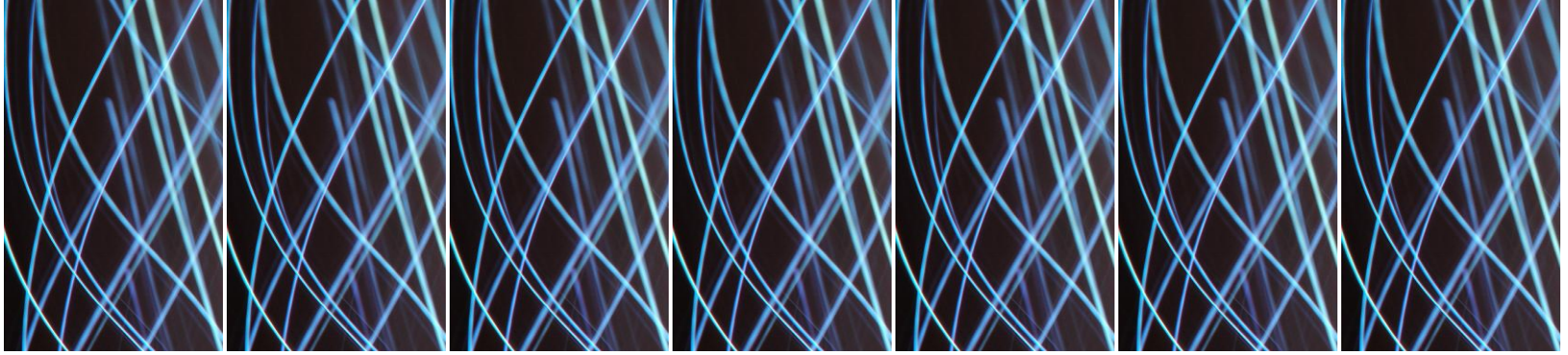
Being into the Cake, Confectionary & Fast-Food manufacturing business the client has given a lot of thrust to customer service. Hence, along with the quality conscious customers, the client was facing the following business challenges in order to drive maximum customer satisfaction and improve their quality of services.

- Quick Response to Customers demand
- Proper Resource utilization
- Real Time Control over outlets
- Increase efficiency in Production Planning
- Proper Supply Chain Management.

Technology Challenges

The technology challenges faced were as follows:

- Outlet Call Management
- Inventory Management
- Inventory control during movement
- Vendor Co-ordination
- Availability of data



Solution

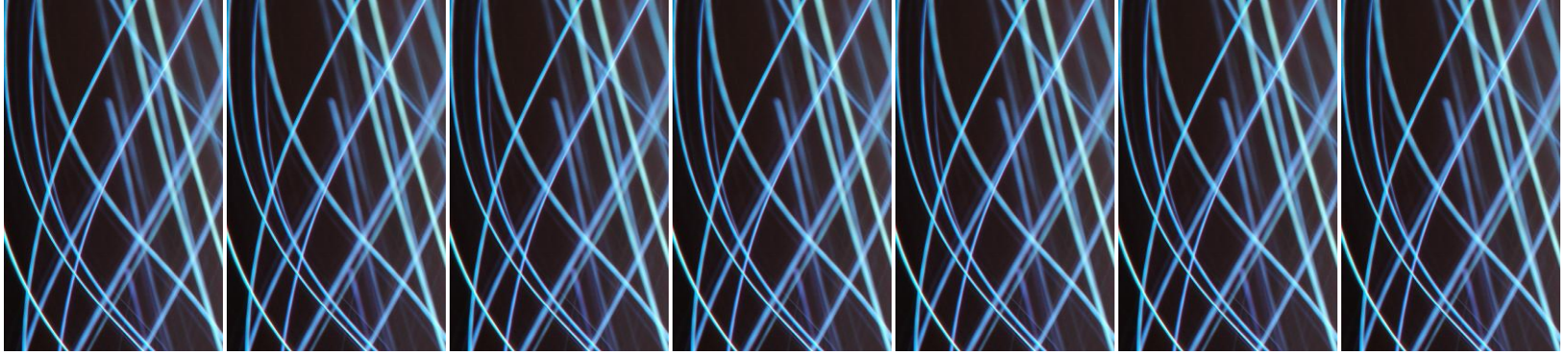
Assessing the current company infrastructure and understanding the requirements for their future business, team Embee proposed the adoption of the international best practice of information technology systems, SAP B1 for the client. The details are given below:

- Initially, our client did not use any application except financial management to manage its operations spread across multiple departments.
- When this opportunity was outsourced to Embee, being nationally recognized as an ERP consultant and implementer, they presented their solution to the organization to make them realize the importance of implementing the ERP solution proposed which would help them to eliminate the unnecessary increasing costs, have a stronger control, increase efficiency of operations, better synchronization across functional domains and better productivity of people.
- Embee with its native domain expertise in system integration and IT management services offered support on: Supply Chain Management, Financial Management, Production Management, Integration and real time data management between HO and outlets, Vendor Control, Technology Consulting.
- The client realized the gap between the two systems and under the consultancy of the Embee team they put in to place the centralized Integrated Business Solution.
- SAP B1 was successfully installed and implemented across our client's organization

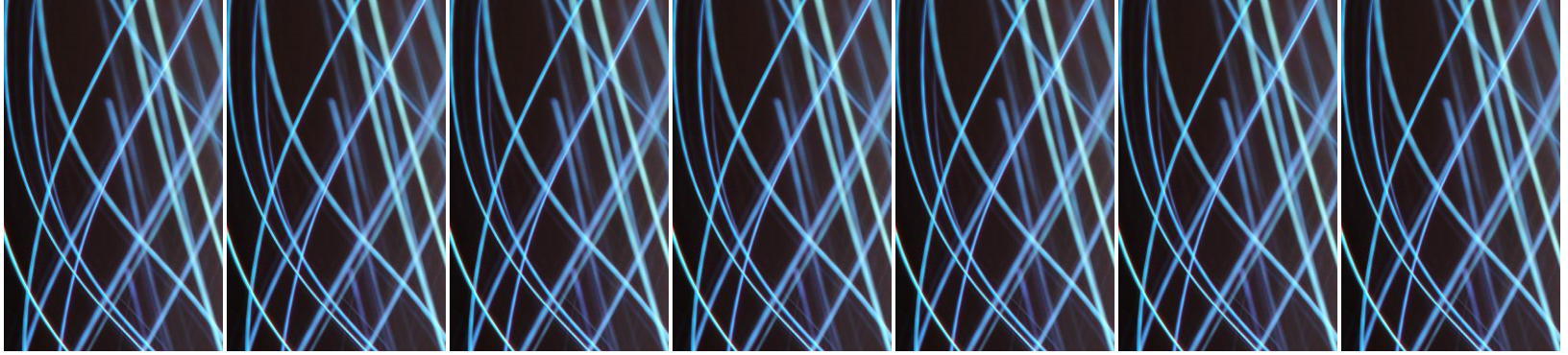
Results

SAP B1 is a line of integrated, adaptable and upgradable Business Management Solutions that enables the client to make business decisions with greater confidence. And Embee's efficient ERP consultancy helps client to build up a best practices across the organization. During the entire contract life cycle, **Embee team** monitored following objectives through continual improvements and objectified reporting:

- **Material Planning and Control**
Aggregate production planning, routing and the most recent data help the client in precise estimation of inputs. This cuts down wastage, shortens time to-market cycles. Integrated system ensures accurate tracking of material usage against procurement plan order-wise and inventory control.
- **Work-in-Process Monitoring**
Efficient tracking of work-in-process against the customer confirmed order used to track shipment schedule, costs and budgetary variances.



- **Reduce costs**
Better inventory control reduces costs by optimizing inventory levels, reducing the procurement timeline and preventing overstocking.
- **Reduce Cycle Time**
Reduced production cycle time, supports build-to-order, engineer-to order and build-to-forecast.
- **Integrated Collaboration**
Our client witnessed an optimal utilization of resources by the effective streamlining and integration of customer service, design, sampling merchandising, production, distribution & financial processes
- **Accurate Estimation and Waste Reduction**
End-to-end integration of company data, aggregate production planning, routing and the most recent data help in precise estimation of inputs, leading to cutting down on wastage and shortening time-to-market cycles for new collections.
- **Streamline Business Processes**
This solution proposed by Embee automates routing business processes, integrates data across the company and facilitates an effective work flow to help streamline the business processes and improve efficiency.
- **Make Effective Business Decisions**
An instant and complete overview of the business for production orders and inventory levels were witnessed. Business and financial reports are always up to date and fully integrated with information from all other areas in the program.



About Embee Software

Embee is an ISO 9001-2008 certified technology services and solutions provider whose service offerings span the entire range of IT. We deliver end-to-end solutions that can manage and support our customers' IT systems across the entire value chain — infrastructure, applications and ERP. This depth, diversity and delivery capability ensures adaptability to client needs, bringing out the most innovative solutions in every business and technology domain.

Embee's value proposition is based on its vast experience in providing single-window solutions to its customers across diverse function and technology areas. Each experience has transformed Embee to become a more mature solutions provider, and has enabled it to understand business, technology and operational elements in great detail.

Embee Software is also a world-class provider of turnkey IT solutions like Server & Storage Consolidation, Virtualization, Network Integration Solutions and Data Center Management Solutions, Embee provides end-to-end support with guaranteed SLA (Service Level Agreements) in order to optimize infrastructure management and align IT with business goals.

Contact Embee Software Pvt Ltd today for free consultation:

Embee Software Pvt Ltd,

8 A J C Bose Road, Circular Court, 2nd Fl,

Kolkata - 700-017, India.

E: marketing.cal@embee.co.in

T. +91 33 22891740