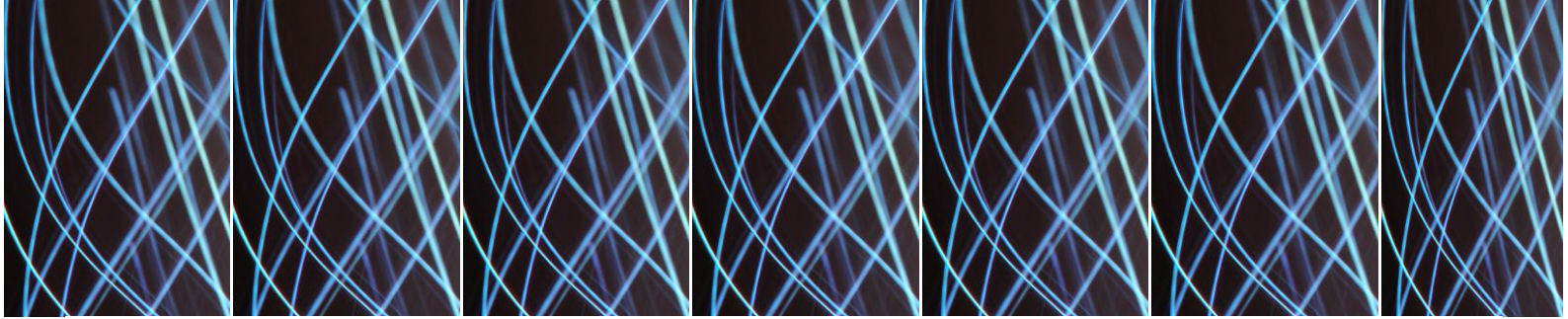


2011

Case study for Designing & Implementation of Boardroom Solution

For a government body





SNAPSHOT

Industry

- Construction industry

Business Challenges

- Upgrade IT infrastructure

Embee Solution

- Designing and Implementation of boardroom solution

Business Benefits

- Enhanced efficiency
- Access to modern technology

Contract overview:

This agreement is a sub contract given to Embee Software Pvt. Ltd from our end customer WBIDC (West Bengal Industrial Development Corporation). **WBIDC**, formed in 1967, is the premier agency of the State's Commerce and Industries Department to support economic development across the West Bengal.

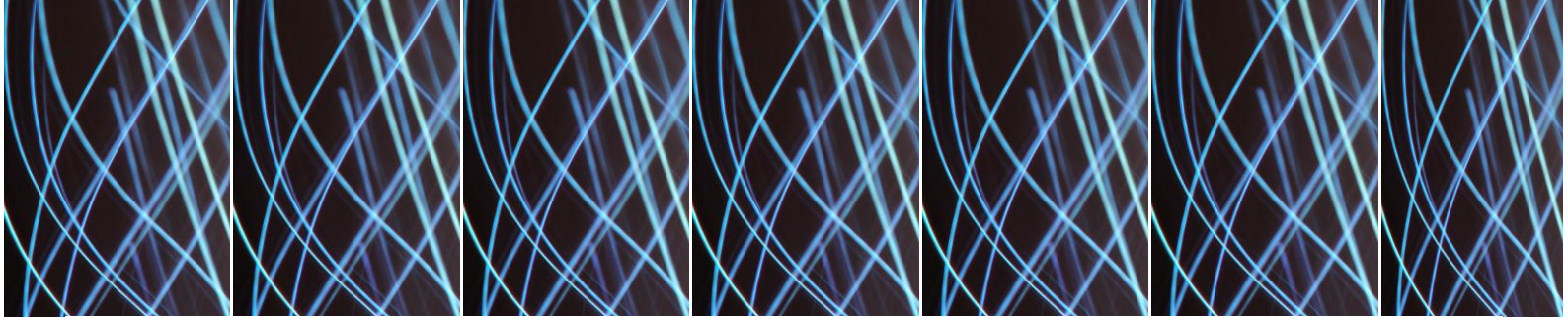
Company overview:

Our client is a dynamic enterprise which draws vital support from its various individual entities to be able to execute turnkey projects, swiftly and efficiently. They specialize in Construction, Design & Build and EPC.

Our client has built diverse civil and structural engineering masterpieces like factories, nuclear research establishments, nuclear waste handling establishments, scientific and research establishments, stadia and auditoria, airports, hotels, hospitals, giant skyscrapers, housing complexes, townships, water treatment plants, roads, expressways, power plants and biotech facilities.

Business challenges:

WBIDC, being responsible for the development of industries across West Bengal desired to improve and upgrade it's the IT infrastructure.



Solutions and Services:

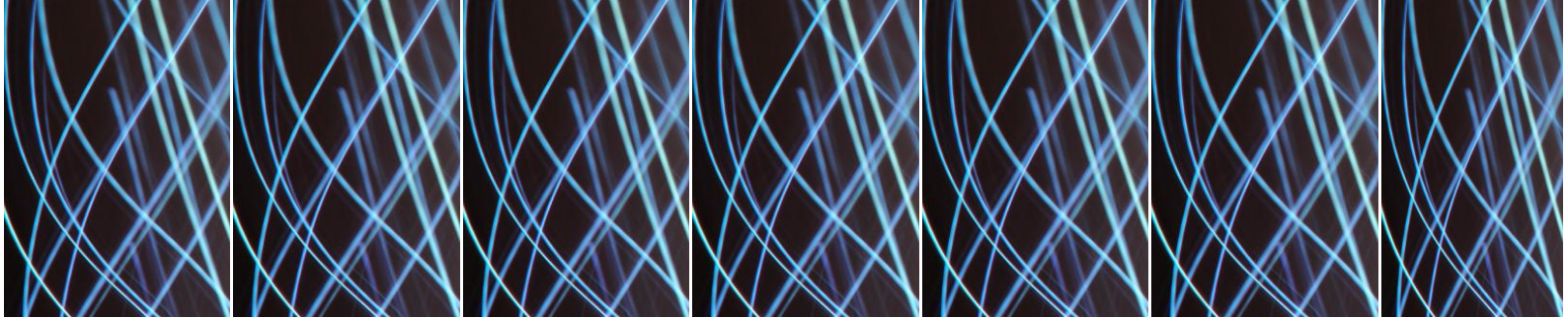
Our esteemed client required a solution for setting up an ideal boardroom for their client WBIDC. Thus, when Embee received the sub-contract we analysed the situation and tried to understand the pain points of both customers, the budget, existing resources and future plans for the end client. After our initial interactions and site visits a solution was designed & presented from our side.

After negotiations held with concerned authorities at WBIDC and our client place, we bagged the order. The above project was successfully executed at WBIDC within the stipulated time.

Result :

Embee team made the following conclusion:

- Modernized business meetings
- Aesthetic Looks
- Modernized approach to operate
- Increase operational efficiency



About Embee Software pvt. Ltd

Embee is an ISO 9001-2008 certified technology services and solutions provider service offerings span the entire range of IT. We deliver end-to-end solutions that can manage and support our customers' IT systems across the entire value chain — infrastructure, applications and business productivity. This depth, diversity and delivery capability ensures adaptability to client needs, bringing out the most innovative solutions in every business and technology domain.

Embee's value proposition is based on its vast experience in providing single-window solutions to its customers across diverse function and technology areas. Each experience has transformed Embee to become a more mature solutions provider, and has enabled it to understand business, technology and operational elements in great detail.

Embee Software is also a world-class provider of turnkey IT solutions like Server & Storage Consolidation, Virtualization, Network Integration Solutions and Data Center Management Solutions, Embee provides end-to-end support with guaranteed SLA (Service Level Agreements) in order to optimize infrastructure management and align IT with business goals.

Contact Embee Software Pvt. Ltd. today for free consultation:

Embee Software Pvt. Ltd.,
8 A J C Bose Road, Circular Court, 2nd Floor
Kolkata -700017, India.
E: marketing.cal@embee.co.in T. +91 33 22891740