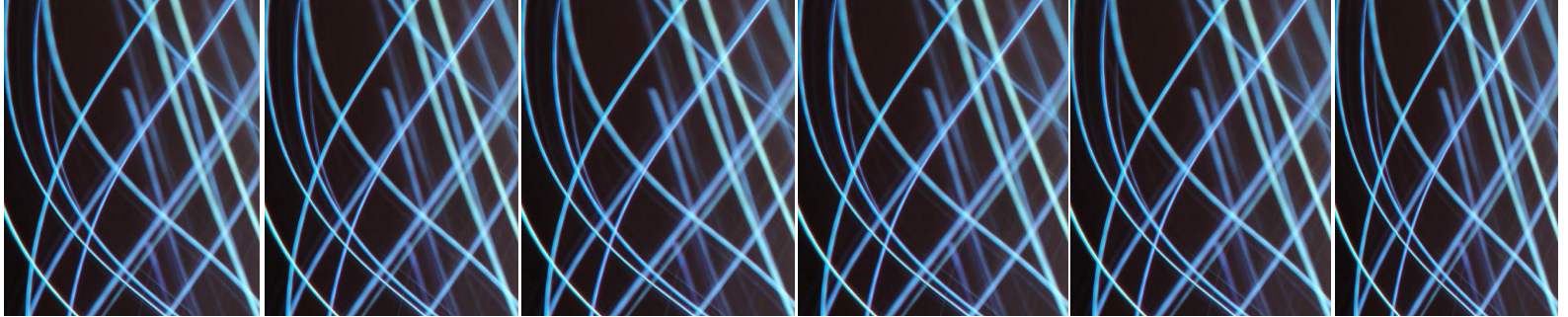


2011

Case study for SAP Business One

A distributor of telecom products company





SNAPSHOT

Industry

- Distribution of telecom products

Business Challenges

- MIS not efficient
- Lack of data reliability
- Ad hoc business processes
- Inventory management
- No reports

Embee Solution

- ERP Implementation

Business Benefits

- Enhanced customer service
- Access to reports and payment details
- Quality services with competitive advantage
- Real time reporting for better control

Company overview:

Our client is a technology driven and customer focused organization. It is building India's leading electronic consumer payments network and in the business of implementing and operating payment networks for multiple services namely mobile prepaid top-up, DTH top-up and Cash acceptance for various services providers/utilities.

Business challenges:

- Better quality reporting to enable intelligent business decisions.
- Multiple control points at different levels.
- Effective price management & inventory management.
- Lack of Stock valuation.
- Insufficient Management Information System
- Fragmented business systems
- Unreliability of data due to manual processing

Technology Challenges

- Integration with current operational systems
- Dealers performance management
- Inventory management
- Data availability
- Better security with more control points



Solutions and Services:

Our client is looking for a solution which is highly robust, cost effective, with good scalability and extendibility and high degree of data security. Upon understanding our client requirements and evaluating their future plans, team Embee concluded that SAP would be an ideal solution to meet the client's challenges.

The following were executed:

- Integration of in-house developed operational software with SAP business one.
- Controls were put at various levels in sales and invoicing process
- Controls were put in the procurement and liability creation process
- XL reporting implementation was done for better reporting & analysis

Result :

Embee team monitored following objectives.

- Reduce inventory costs and stock levels
- Easy access to online, accurate data from top management levels to all the employee
- Integrate all business process into a single system
- Integration with operational systems.
- Effective price management & inventory management.
- Better cost control on service orders leading to improved margins.
- Monitoring payments and receivables.
- There is easy access to reports
- Enhanced customer service
- Streamlined transaction and management control system
- Data security and integration with our operational systems has been achieved



About Embee Software pvt. Ltd

Embee is an ISO 9001-2008 certified technology services and solutions provider service offerings span the entire range of IT. We deliver end-to-end solutions that can manage and support our customers' IT systems across the entire value chain — infrastructure, applications and business productivity. This depth, diversity and delivery capability ensures adaptability to client needs, bringing out the most innovative solutions in every business and technology domain.

Embee's value proposition is based on its vast experience in providing single-window solutions to its customers across diverse function and technology areas. Each experience has transformed Embee to become a more mature solutions provider, and has enabled it to understand business, technology and operational elements in great detail.

Embee Software is also a world-class provider of turnkey IT solutions like Server & Storage Consolidation, Virtualization, Network Integration Solutions and Data Center Management Solutions, Embee provides end-to-end support with guaranteed SLA (Service Level Agreements) in order to optimize infrastructure management and align IT with business goals.

Contact Embee Software Pvt. Ltd. today for free consultation:

Embee Software Pvt. Ltd.,
8 A J C Bose Road, Circular Court, 2nd Floor
Kolkata -700017, India.
E: marketing.cal@embee.co.in T. +91 33 22891740